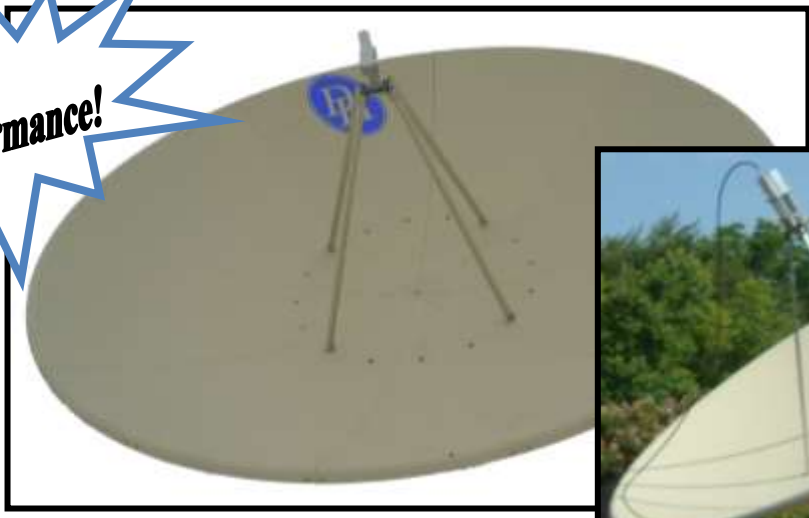


DH 3.7M 60" Az-El Mount

Performance!



Specifications	3.7m
Antenna Sections	4
C Band Gain @ 4 Gig	42.3 db
Ku Band Gain @ 12 Gig	51.1 db
Thickness	.085
f/d Ratio	.4
Wind Force at 60° at 90 MPH	4,200 lbs
First Side Lobe (E-Plane)	2.4°
All Side Lobes	-22 db
3db Beam Width (E-Plane)	1.4°
F/L	57.6"
Antenna Weight (One Piece)	180 lbs
Antenna Weight (Sectional)	165 lbs
Crate Dims w/Antenna	76"x36"x78"
Approximate Weight	348 lbs
Mount Weight	272 lbs
Pallet Dims w/Mount	64"x64"x27"
Approximate Weight	320 lbs

60" Az-El Mount Features

- 60" Ring with 16 blocks
- 10 to 80° Elevation adjustment
- 360° Manual azimuth travel
- 5.62" I.D. Base Can
- 8 Back Braces
- 4 Struts

OPTIONAL:

- Hot Dip Galvanizing
- Base Post TX Stand 5.5"
- Base Post TX Stand 6.6"
- Optional 6 5/8" Base Can
- Non-Penetrating Roof Mount
- Electronics, Feedhorns, LNBS, Cabling
- Half/Full Dish De-icing

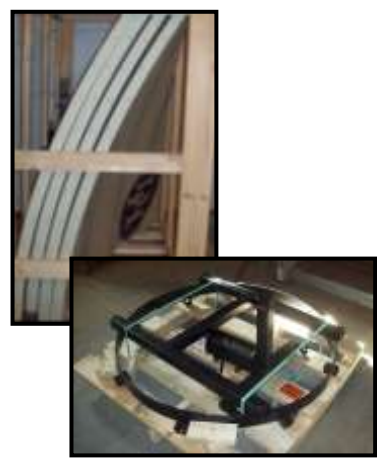
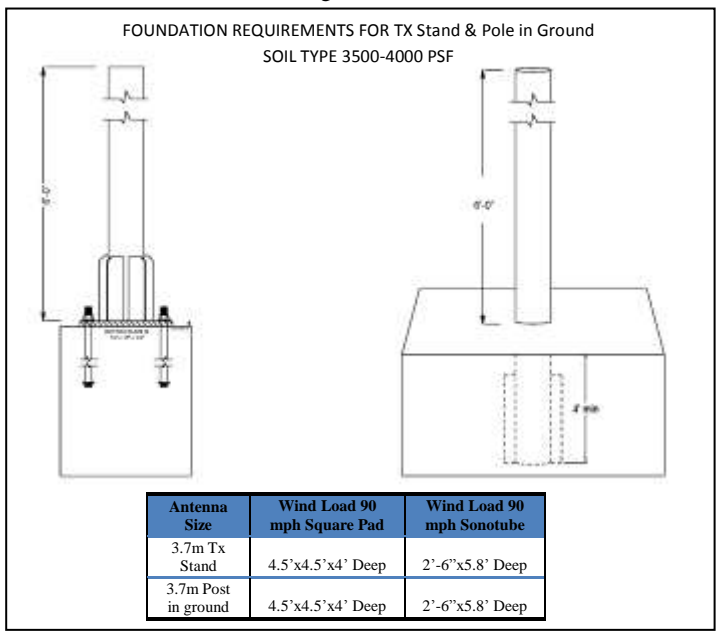
With today's innovative technology DH is manufacturing various sizes of sectional antennas.

DH antennas are manufactured from aluminum using the spinning process. Each antenna is manufactured as one piece prior to being cut into 4 or 8 sections. Ribs are secured to the back structure of the parabola allowing for the antenna to be re-assembled as a complete unit. DH Antenna's preferred method of installation is to build the antenna on the ring placing each section on the ring for attachment. Most antennas can be installed with 2 or 3 people and a 3.7m Fixed Az-el can be built on the ring and peaked in an estimated 6 hours.

*Antenna sizes are nominal
 *Custom crating available
 *Dimensions & weights are approximate

DH Satellite

600 N. Marquette Rd.
 Prairie du Chien, WI 53821
dhsat@mhtc.net www.DHSatellite.com



Crating available for domestic or International ISPM 15 Packing